

SpeedSentry Standard

Overview

SpeedSentry™ signs monitor the speed of approaching traffic and display that speed on 270mm high visibility digits. Integrated or stand alone video camera units allow for the identification of vehicles that are exceeding the posted speed limits.



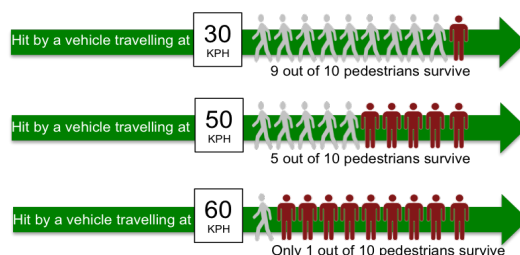
Speed Management solution

Most estates are an extremely safe environment and have many pedestrians, young children and pets on the streets. Speed limits are set low to take this into account, but these limits are often ignored and estates do not necessarily have the manpower to aggressively prosecute offenders.

Camera System

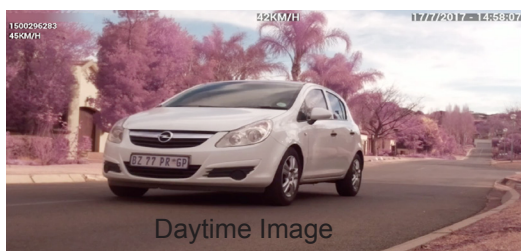
SpeedSentry Standard camera units can be integrated into the SpeedSentry shell or used as a stand alone :

- Takes video clips of vehicles exceeding the programmed speed;
- Overlays the video footage with the speed, date and unit reference;
- Video clips are stored on the system until downloaded;
- Video clips can be emailed automatically if an Internet (wireless / Ethernet) connection is available;
- Stores advanced traffic monitoring data as well.



Why are speed limits important in Residential Estates?

Technical specifications		
	Display Only	With Day/Night Camera
Size mm (h x w x d)	700 x 500 x 65	
Display Size	280 mm	
Power Supply	220V AC / Solar / Battery	
Pickup Distance	Legible at 90 m	
Infrared Lamp	No	Yes
Camera Angle	No	45 Degrees
Beam Angle	38 x 45 Degrees	
CE and FAA Approval	Yes	
Brightness	11000 nits (cdm) max/ 500 nits (cdm) at night	



Daytime Image



Night time Image

Warranty and Liability Statement

This product is subject to the normal terms, conditions, warranties and disclaimers of Ambrosys, its distributors and representatives.